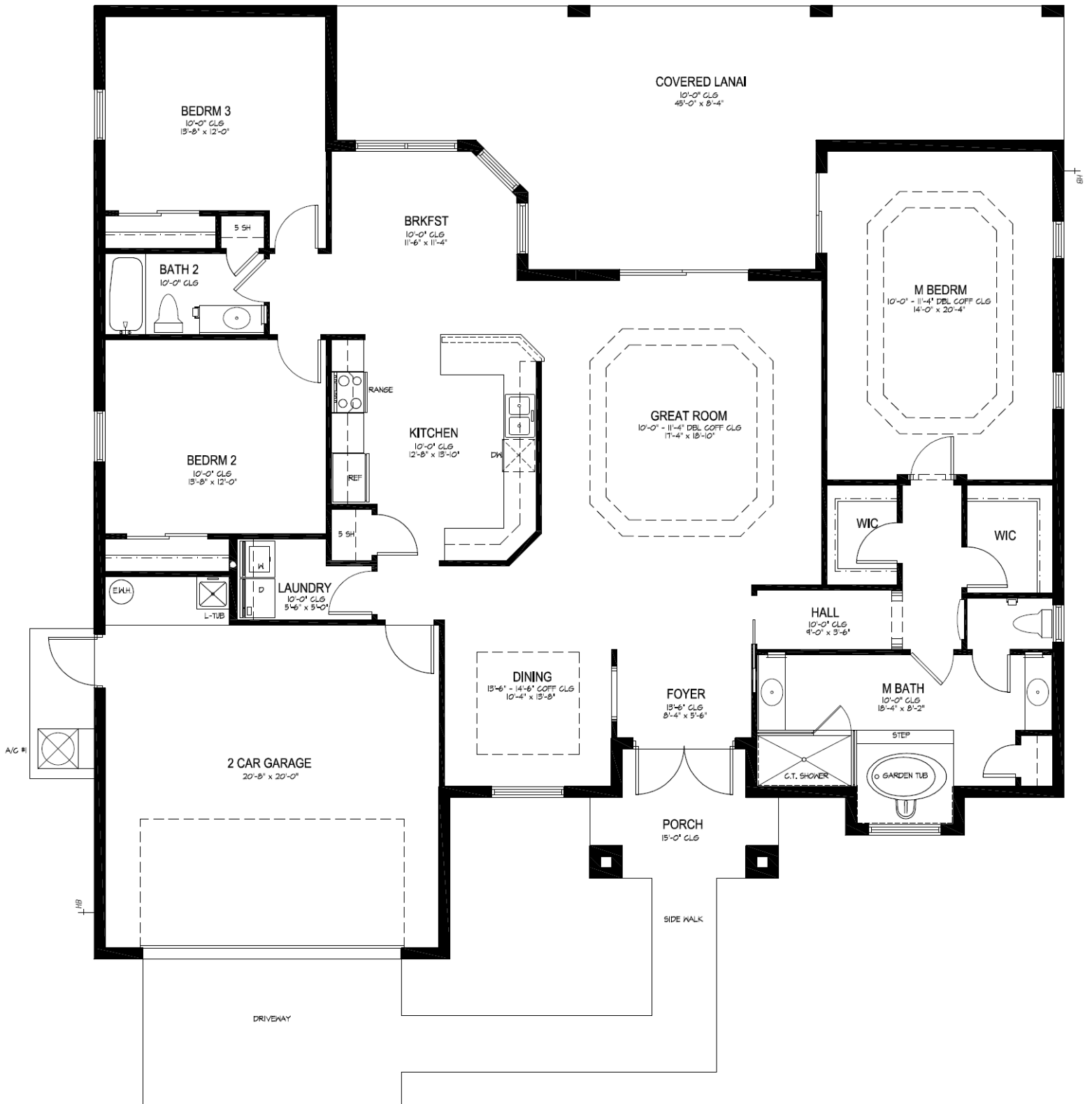


# Tuscany Model (Floor Plan)

3 Bedroom, 2 Bath, Covered Lanai, 2 Car Garage



This sheet is for illustrative purposes only and not part of a legal contract. Floor plans and standard features may vary according to alternate styles selected and are subject to change without notice. All square footages are approximate.

# Tuscany Model (Elevations)

3 Bedroom, 2 Bath, Covered Lanai, 2 Car Garage



**Front Elevation**



**Alternative Front Elevation**

## **SQUARE FOOTAGE**

(APPROX.)

Living.....	2,158 Sq. Ft.
Entry.....	.81 Sq. Ft.
Lanai.....	525 Sq. Ft.
Garage.....	474 Sq. Ft.
<hr/>	
Total Under Roof.....	3,238 Sq. Ft.

  
**H<sup>3</sup>homes**  
Luxury Home Builders

This sheet is for illustrative purposes only and not part of a legal contract. Floor plans and standard features may vary according to alternate styles selected and are subject to change without notice. All square footages are approximate.

1779 SW California Blvd., Port St. Lucie, FL 34953 • Phone: 1-800-586-1636 • Fax: 1-800-294-4223 • Web: [www.h3homes.com](http://www.h3homes.com)